

COMPETENCY BASED LEARNING AND ASSESSMENT: “Starting Points Assessment Options”

COLLOQUIUM ON COMPETENCY BASED LEARNING AND
ASSESSMENT: 2016 EISENHOWER FELLOW
Wednesday 8th June 2016, Wellington



Starting Points

Starting Points Assessments

1. Beginning English language learners (ESOL). Particularly those new to Aotearoa New Zealand. (Starting Points Listening)
2. Learners at foundation stages of learning to read. Includes both English language learners (ESOL) *and* learners who have grown up in Aotearoa/New Zealand and have English as their first language (Starting Points Reading)



Starting Points

Starting Points Listening - challenges

“How do you design an online interactive assessment for learners who may have little or no formal education in their home countries, let alone familiarity or confidence with technology??”



Starting Points

Addressing the challenges

- Tablet based delivery – designed for 1-1 support by tutor/teacher.
- Support videos on assessment homepage.
- Limited to two question types – to help learners become familiar with question layout and how to answer.
- Repeated use of icons to deliver questions.



Starting Points

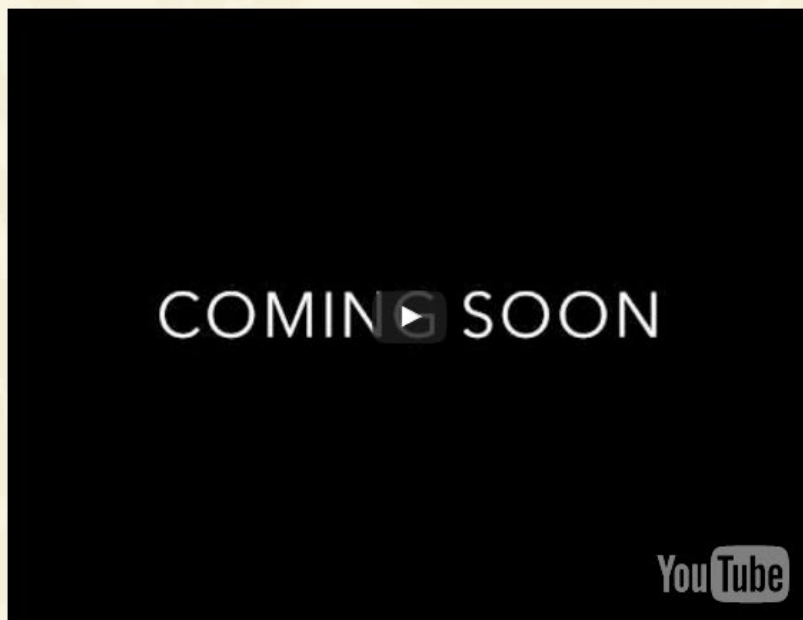
Addressing the challenges

- Use of both male and female voices.
- Ability to skip a question.
- Mechanism to end the assessment early when certain conditions are met.
- New 'Discontinued' result.



Starting Points

Hello! Kia ora!



Put your code here:

Start ▶

Choose a button
to watch a guide



Reading



Listening