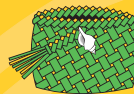


Manako

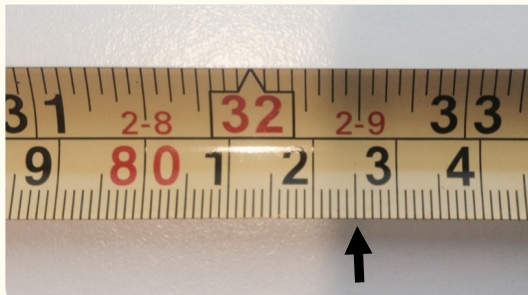


Error analysis | Reading a tape measure

Mary was asked to measure the width of a pathway and read the following measurement as 802.5cm.

Questions:

1. What mistake has Mary made?
2. How would you help Mary avoid this mistake in the future?



Find some prompts on the back of this card »

Some prompts to guide your thinking:

- » Tape measures are more difficult to read than most people realise.
- » Tape measures come in several different formats (metres, centimetres and millimetres).
- » Many tapes use 'signal points' to mark 'tens' to save space.

Scan the QR code to find out why Mary made this mistake and how you can teach this concept.

