

Ako Aotearoa Southern Regional Forum

9 June 2023 | Christchurch



Waiho mā te ahurei o te ākongā ā tātou mahi e ārahi
Let the uniqueness of our learners guide us in our work

Nā āheitanga ā-mātauranga,
ko angitū ā-ākongā
Building educational capability
for learner success

Ako
AOTEAROA

Welcome

Tihei mauri ora!

Whakatau mai rā e ngā tai whakarunga, e ngā tai whakararo

Whakatau mai rā e ngā waka tangata, e ngā waka wairua

Ki runga rā o Ōtautahi, ki raro rā hoki i te maru o Aoraki

Haere mai rā ki tēnei hui whakawhiti mātauranga ā Ako Aotearoa

Ka whakairi nei i te whakataukī nei hei tāhūhū mō te hui

'Waiho mā te ahurei o te ākongā ā tātou mahi e ārahi'

On behalf of Ako Aotearoa, we are delighted to welcome you to the Ako Aotearoa Southern Regional Forum. After successful Regional Forums in Auckland and Wellington earlier this year, we are very much looking forward to continuing our discussions this time around in Christchurch.

This Forum provides a platform for sharing the challenges you have faced in recent times and for sharing strategies you have found that work, as well as promising developments. We invite you to connect with colleagues from other organisations and disciplines who may have very different perspectives and contexts, but actually share many similar challenges. Some of the solutions may well be in the room, and this Forum will allow you all to extend your network of opportunity, influence, and partnerships.

The Forum will also help Ako Aotearoa to further understand the needs of the sector, and help to guide us in our mahi to support the work you do.

We hope that you will enjoy this opportunity to connect, collaborate, and explore promising possibilities and new ideas that we can work on together.

Nāku te rourou, nāu te rourou, ka ora ai te iwi. With your basket and my basket, the people will prosper.

Nāku noa, nā,



Helen Lomax
Director | Tumuaki



Jennifer Leahy
Sector Services Manager
Southern Hub

Programme

Time	Action
8.45	Networking Tea/Coffee
9.00	Mihi Whakatau with karakia and waiata – Dr Joe Te Rito, Dr Mei Winitana
9.10	Tai Samaeli (MC) , ACE Sector Capability Manager, ACE Aotearoa Housekeeping, programme outline and Whakawhanaungatanga
9.30	Jennifer Leahy , Southern Sector Services Manager, Ako Aotearoa Introductions to Helen Lomax and Ako Aotearoa Staff
9.35	Helen Lomax , Tumuaki/Director, Ako Aotearoa Ako Aotearoa 2023 and beyond
9.45	Dr Joe Te Rito , Kaihautū Mātauranga Māori/Deputy Director Māori, Ako Aotearoa Diversity: Ako Aotearoa Mātauranga Māori programmes
9.55	Hemi Hoskins , Director – Organisational Culture and Capability – Kiriwhanake, Te Wānanga o Aotearoa Wellbeing: Kaimahi wellbeing kaupapa
10.10	Kōrero/Talanoa at tables
10.25	Morning Tea – Te Paramanawa o te Ata
10.55	Joanna Fox , Manager, Hagley Adult Literacy Centre Language, Literacy and Numeracy: Ideas to engage with neurodiverse learners
11.10	Kōrero/Talanoa at tables
11.25	Dr Saba Azeem , Evaluation Advisor, Ako Aotearoa Online/Face-to-face Learning: Impacts from Ako Aotearoa PLD
11.35	Vai Punivai , Business Strategy Manager, BCITO Engaging Learners: Engaging learners in the industry
11.50	Kōrero/Talanoa at tables
12.15	Lunch – Tina

Time	Action
1.15	Michael Grawe , PLD Consultant, Ako Aotearoa Energiser
1.20	Dr Kay-Lee Jones , University of Canterbury Engaging Learners: Being recognised as an 'excellent' teacher
1.35	Kōrero/Talanoa at tables
1.50	Pale Sauni , Pacific Priorities and Cultural Leader, Ako Aotearoa Diversity: Ako Aotearoa Pacific Programmes
2.05	Kōrero/Talanoa at tables
2.20	Energiser/Short break
2.30	Diana Law , Te Pūkenga Wellbeing: The Pastoral Code: What difference does it make?
2.50	Kōrero/Talanoa at tables
3.05	Analiese Robertson , Director, ACE Aotearoa Impacts from the day
3.20	Ainslee Collins , Senior Organisational Development Advisor, Ara Institute of Canterbury Reflections on the day
3:45	Karakia Whakamutunga – Pale Sauni
	Waiata – Dr Mei Winitana

Special thanks to ITENZ for supporting the Southern Regional Forum



2023 Conference
12-13 September
Town Hall, Christchurch

He Pihī, He Tupu, He Puāwai!

Learning, growing and thriving: tertiary and PTEs in 2024 and beyond.

Southern Regional Forum presenters



Ainslee Collins

Ainslee has over ten years' experience in both learning and development and organisational development roles in the private, public, and not for profit sectors. She has expertise in mental health and wellbeing, coaching, capability, and leadership development and is passionate about supporting individuals, teams, and organisations to achieve their goals. Outside of work, Ainslee enjoys spending time with her two sons, walks in the Canterbury region, and catching up with friends and family.

ainslee.collins@ara.ac.nz



Analiese Robertson

Analiese is the Director of Adult and Community Education (ACE) Aotearoa, with an extensive background in adult literacy and tutor training, community development and education. She has contributed to the development of ACE policy and strategies in tertiary education. She led the development of the ACE Teaching Standards in 2011 as an aspirational scaffold to improve learner outcomes, and socialised with the ACE sector titled for appeal, From Pretty Dodgy to Better-Gogy (credit to Bruce George). Analiese is the Chair of Ako Aotearoa Pacific Peoples Caucus, and a member of the Ako Aotearoa Board.

analiese.robertson@aceaotearoa.org.nz



Diana Law

Diana has been working in the tertiary education sector for three decades – mainly in Canterbury in the ITP sector. She has worked in academic delivery across all levels, programme design, and pastoral management including all aspects of the Pastoral Code.

Diana is an independent contractor and is leading the Pastoral Code Project for Te Pūkenga. This project is bringing together the review of pastoral care of ākonga/learners from 25 previous organisations, some of whom are new to the Code this year. Together they have produced the first Te Pūkenga Code Self-Review.

Diana is currently a student in both the ACE and Vocational Education sectors. She is passionate about the value of diverse learner voices in on going conversations and decisions that are contributing to a better education system.

diana.law@outlook.co.nz



Heather Milne (Photographer)

Heather is a digital photographer based in Christchurch, New Zealand. She draws on her observations and experiences of trauma, recovery, and transformation to create photographs that document social and environmental change, and shared community experiences. Over the past five years, her photography has included themes such as gender, art accessibility, urban decay, natural disasters, and public grief.

In addition to exhibitions and volunteer photography, Heather's commercial work covers events, architecture, art collaborations and portraiture throughout New Zealand, and she balances this with parenting her teenagers, and drinking coffee.

heatherjoyphotographs.co.nz



Helen Lomax

Helen (Te Aitanga-a-Mahaki) is Director/Tumuaki of Ako Aotearoa, which hosts the Tertiary Teaching Excellence Awards and provides funding and services to build sector educational capability. Helen has been a judge for the Global Teaching Excellence Awards for Advance HE, United Kingdom and worked on projects for international quality peer review benchmarking with universities and institutes from New Zealand, Australia and Pacific countries including Samoa, Fiji and Papua New Guinea. For the Tertiary Education Commission, Helen led programmes for priority learner groups, literacy and numeracy and funding for centres of research excellence. Helen previously worked as a consultant for projects on Māori business development, developing human capabilities, industry learner reps, work-based learning and women in trades. In her early career Helen worked as a policy advisor in Justice, Te Tiriti o Waitangi, Corrections and Health, and was an editor and policy advisor for Huia Publishers, helping to establish its inaugural Huia Short Story Awards, now the Pikihiua Short Story Competition.

helen.lomax@ako.ac.nz



Hemi Hoskins

Ka tū ahau ki runga i a Huruiki, titiro iho ki te awa e rere ana ki tai, ko Whakapara tērā. Ka huri atu taku mata i runga i te karanga o Te Tawaka, ki a Ngāti Hau, ki Te Ihi o Nehua. Ko Hemi Hoskins tēnei e mihi ana ki a koutou.

While my lineage ties me to the north I have grown up in the South Island and thus acknowledge the hospitality of the local iwi. I have long had a passion for education and the transformative potential it has for our people which has seen me drawn into teaching, educational design, educational leadership and more recently a focus on the development of the capability of kaimahi as leaders and educators within a wānanga context, common through all of these roles has been the ultimate goal of improved experiences and outcomes for tairā.

Hemi.Hoskins@twoa.ac.nz



Joanna Fox

Joanna is the manager of the Hagley Adult Literacy Centre based in Ōtautahi Christchurch. As well as a Bachelor of Arts in Japanese and Education, Joanna has a Masters in Adult Literacy and Numeracy Teaching. In the education field, Joanna's particular interest is in neurodiversity and finding ways to help and support neurodiverse learners. Her teaching experience includes workplace literacy and numeracy, ESOL, and aviation English. In her spare time, Joanna likes biking, reading, playing board games, and drinking coffee!

joanna.fox@hagley.school.nz



Dr Joseph (Joe) Te Rito

Joe is Rongomaiwahine/Ngāti Kahungunu. Te Reo Māori is his passion. He is founding head of Radio Kahungunu and continues in that role 35 years later. He headed Māori Studies at EIT where he worked for 17 years before heading to Auckland University to complete his PhD, and where he gained employment with Ngā Pae o te Māramatanga for 11 years as Kaiwhakahaere of Tikanga and Reo.

Joe then came to Ako Aotearoa where he has worked for the last 7 years as Kaihautū Mātauranga Māori/Deputy Director, Māori. He is proud of our Mātauranga Māori programme – particularly the suite of Te Tiriti o Waitangi and Māori cultural capability professional development courses that we offer.

joseph.terito@ako.ac.nz



Dr Kay-Lee Jones

Kay-Lee currently works in Teacher education at Te Whare Wānanga o Waitaha | The University of Canterbury. She is a proud māmā of three beautiful Māori, Samoan tamariki and has a teaching background in Kaupapa Māori learning settings. Her doctoral study focussed on the pūrākau (stories) of early childhood and primary teachers from Puna Reo 51% + te reo Māori immersion programmes.

Kay-Lee is a teacher of teachers, committed to “helping grow a heart for te Ao Māori”. The Board Chair of Te Pā o Rākaihautū describes her as “a great role model not only for her whānau but all who meet her.” In addition to winning a UC Teaching award in 2020, Kay-Lee has also been recognised on the national level by the prestigious Ako Aotearoa Sustained Excellence in Tertiary Teaching award – Kaupapa Māori category – only the second teacher at UC to achieve this.

kay-lee.jones@canterbury.ac.nz



Michael Grawe

Michael is a Professional Learning and Development Consultant at Ako Aotearoa and the Professional Learning Manager for Pathways Awarua, where he focuses on literacy and numeracy education. With a master’s degree in American Literature, Media Studies, and Teaching, he has dedicated over 20 years to the education sector, both in Aotearoa and abroad.

Having worked in various roles such as ESOL, as a Kaiako for Business & Computing, and Advisor for Literacy, Language and Numeracy at Te Wānanga o Aotearoa, he has made significant contributions as a resource developer, facilitator, and presenter at conferences, showcasing his expertise and insights on effective literacy and numeracy instruction.

Passionate about learner success and whānau transformation through education, Michael understands the power of education in driving positive change and has been instrumental in supporting the professional development of educators and empowering learners to achieve their goals.

michael@pathwaysawarua.com



Pale Sauni

Pale is Ako Aotearoa's Pacific Priorities and Cultural Leader. He was born in Samoa and had all his formal education in New Zealand. He is a highly experienced workshop presenter and co-author of the 'Pacific Cultural Centredness Pathway' featured on Pathways Awarua. This online interactive tool provides practical ways to use specific Pacific values and principles, ethnically centred to safely approach seven Pacific community groups who live in Aotearoa: Tonga, Samoa, Tuvalu, Tokelau, Fiji, Cook Islands and Niue. Pale uses humour, research, song, activities, and role-play to engage workshop participants and build their cultural capability.

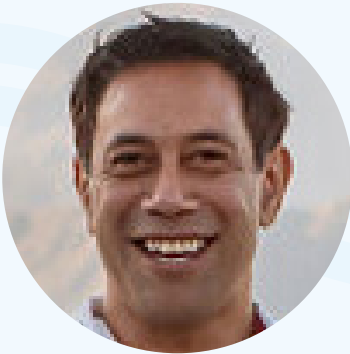
pale.sauni@ako.ac.nz



Dr Saba Azeem

Saba is currently working as an Evaluation Advisor for Ako Aotearoa. In her role, Saba examines and improves the contributions of Ako Aotearoa events, activities, and outputs in enhancing educator capabilities and learner success outcomes. Now based in the Garden City of Ōtautahi Christchurch, Saba gained her PhD qualification from Massey Business School in 2020 and has worked in a number of advisory and research and evaluation roles in her career.

saba.azeem@ako.ac.nz



Tai Samaeli (MC)

Tai, the ACE Sector Capability Manager for ACE Aotearoa and former Executive Assistant for Ako Aotearoa, brings over a decade of experience, spanning early childhood to tertiary education. Passionate about the performing arts, social media, and communications, Tai's creative flair enriches his work. He actively advocates for ACE educators, seeking continuous learning, networking, and collaborative partnerships to promote growth.

Tai's contributions extend beyond national involvement; he supports the ACE in Ōtautahi Community of Practice group in Christchurch, bolstering the local ACE community. As a self-described introvert, Tai values idea exchange and knowledge sharing, fostering a supportive environment where ACE educators thrive. Tai remains a prominent advocate, championing ACE's importance and supporting professional development nationwide.

tai@aceaotearoa.org.nz



Vai Punivai

Based in Christchurch, Vai manages the Te Pūkenga – BCITO Operations from Taupo to Southland, providing strategic leadership, stakeholder management and regional team responsibilities on educational outcomes for the Construction Industries and its learners.

Vai has been in the Vocational Education sector for over 18 years; on the ground working with both young Engineering & Construction apprentices, to Management and Leadership roles both regionally and nationally. With a background in Quality Management, Engineering and Lean concepts, Vai has a passion for building young kiwis for a bright future by building capabilities that provide equity of opportunity and to address the varying needs of all learners. Vai sits on various Governance groups, including the Ako Aotearoa Pacific Peoples Caucus, in relation to the progress of Māori & Pasifika as priority and the determination for equal employment opportunities during and post training.

vai.punivai@bcito.org.nz

Ako Aotearoa

The National Centre for Tertiary Teaching Excellence



E tautoko ana i te hapori

Ko wai mātou

Who we are

All our services aim to improve the way people deliver high-quality teaching and learning. That's because we want to bring about lasting change in the tertiary education sector to enhance learner success. Effective networks and strong relationships are important to us and how we work together to achieve this.

Ako Aotearoa holds a unique position in the tertiary education sector. We provide advocacy and leadership on all aspects of teaching theory and practice. Our goal is to encourage and enable excellent educators to support the growth of capable and skilled learners who can contribute to our communities and society.

We support educators, teams and organisations to frame all that they do around the success of their learners, including in workplaces, universities, wānanga, Te Pūkenga, independent tertiary enterprises, and in adult and community education.

Ko ā mātou mahi

What we do

Te Akoranga Ngaio | Professional Learning and Development

Delivering high-quality, relevant, evidence-based professional learning solutions is an important part of what we do.

We contribute to the growth of skilled, culturally capable educators, managers and support staff.

Every year we run a wide range of professional learning and development programmes throughout New Zealand. They focus on topic and skill areas relevant to educators working in a wide range of tertiary contexts.

These workshops and courses are available online, face-to-face (on application and review) and/or in-house. The public schedule for 2023 is available on our website.

Te Whatu Kairangi | Aotearoa Tertiary Educator Awards

Te Whatu Kairangi (previously the national Tertiary teaching Excellence Awards) celebrates outstanding educators across the entire tertiary education sector who are making a difference to learners, their whānau and communities.

The significant changes to these awards introduced in 2022 aim to celebrate the outstanding mahi being done in Aotearoa by tertiary educators and trainers from right across the sector, no matter what they teach or train.

In 2023 two further changes broaden inclusivity further - the Pacific Le Moana Mua Award has been added (replacing the Pacific endorsement) and the General award now has separate criteria for Groups that celebrates collaboration across one or more organisations.

All information at: ako.ac.nz/te-whatu-kairangi including how to enter, dollar amount of awardee grants and past recipients. The Prime Minister's Educator of the Year Award, with an additional \$10,000, is granted to the awardee whose portfolio best exemplifies the overall criteria.

Ko te Rangahau me te Auaha | Research and Innovation programme

From 2022 our new approach is guided by the Ako Aotearoa Research and Innovation Agenda (AARIA), with a strong emphasis on innovation and collaboration with the tertiary sector. The programme focuses more closely with objectives two and three of the current Tertiary Education Strategy and aims to:

- support the tertiary education system and contribute to better tertiary teaching and subsequently better learning outcomes for ākongā/learners
- share research and innovation findings in ways that support teaching and learning/education and training, as well as supporting the interests of any collaborating organisations or entities
- provide opportunities for collaborative work and networking that benefits all involved and contributes to building research capability.

Pūtahi Mātauranga | Knowledge Centre

Our website-based Knowledge Centre has over 1300 resources available free to those working in tertiary education, vocational and workplace training. This wide range of practical resources support staff to build teaching and learning practice to benefit learners.

The evidence-based tools, guides, videos and other outputs are developed from our research, projects and other initiatives. We encourage people to download from ako.ac.nz/knowledge-centre and share widely.

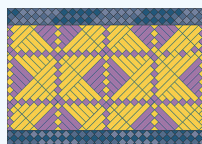
Our Manako programme

Ako Aotearoa's Manako team focuses on building educator capability to enhance cultural inclusion and Language, Literacy and Numeracy (LLN) success for all learners. ('Manako' means "aspiration" and "hope" in te ao Māori).

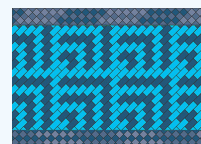
Some key components to the Manako programme include the Dyslexia-Friendly Quality Mark and the Tapatoru Ako Educator Practice Awards. The programme also involves a wide range of high-quality professional learning and development courses and workshops, Māori cultural capability and Pacific cultural centredness online pathways, and leading work on Learner Agency.

Te Pātaka Mātauranga Māori | Storehouse of Māori Knowledge

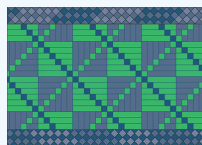
Launched in June 2022, this welcoming new Pātaka or storehouse makes it easy for our web visitors to find resources and information that relate to Mātauranga Māori, Kaupapa Māori and Māori learners. The Pātaka is accessed via four kete, each of which offer ways to build cultural capability both in tertiary education and in general:



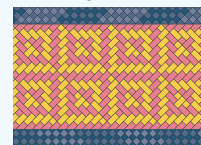
Te Kete Rauemi Mātauranga
Kete of Māori Resources



Te Kete Āheitanga Ahurea Māori
Kete of Cultural Capability
Pathways



Te Kete Hāpai Akoako
Kete of Professional
Learning and Development



Te Kete Huihuinga Tāngata
Kete of Events

Huihuinga Tāngata | Strategic forums and sector events

We run strategic events in priority areas of tertiary education in Aotearoa, such as Tuia Te Ako (our Māori tertiary education hui), and Pacific Tertiary Education Fono. In collaboration with others we influence community development, provide knowledge of effective practice, advance thinking, and explore future direction. We collaborate, sponsor and contribute to a range of sector-wide events organised by other groups.

Communities of Practice

We support communities of practice within the tertiary sector, both internal and external to Ako Aotearoa. We can help with the development of communities of practice within your own organisation, as well as across institutions. Ako Aotearoa facilitates two communities of practice: our Manako CoP is for educators in the adult LLN space. You are welcome to join this community at facebook.com/groups/alnacc/ and contribute. Our Neurodiversity CoP is for anyone with expertise or interest in neurodiverse conditions. If you'd like to join, email Graeme at Graeme.Read@ako.ac.nz

Find us on:

 facebook.com/AkoAotearoa  linkedin.com/company/ako-aotearoa  instagram.com/ako-aotearoa

Connect with us

Jennifer Leahy

Sector Services Manager
for Southern region

jennifer.leahy@ako.ac.nz
021 748 496



Jennifer has extensive experience and skills in the research and facilitation of training and education programmes and has represented Adult and Community Education on our Southern Region Hub Advisory Group for many years. She facilitates the Adult and Community Education (ACE) Ōtautahi CoP, which meets regularly at various venues around the Christchurch to network and keep up to date with ACE and Ako Aotearoa news.



Waiho mā te ahurei o te ākonga ā tātou mahi e ārahi
Let the uniqueness of our learners guide us in our work

Nā āheitanga ā-mātauranga,
ko angitū ā-ākonga
Building educational capability
for learner success

Ako
AOTEAROA